



SCOTTISHPOWER
RENEWABLES

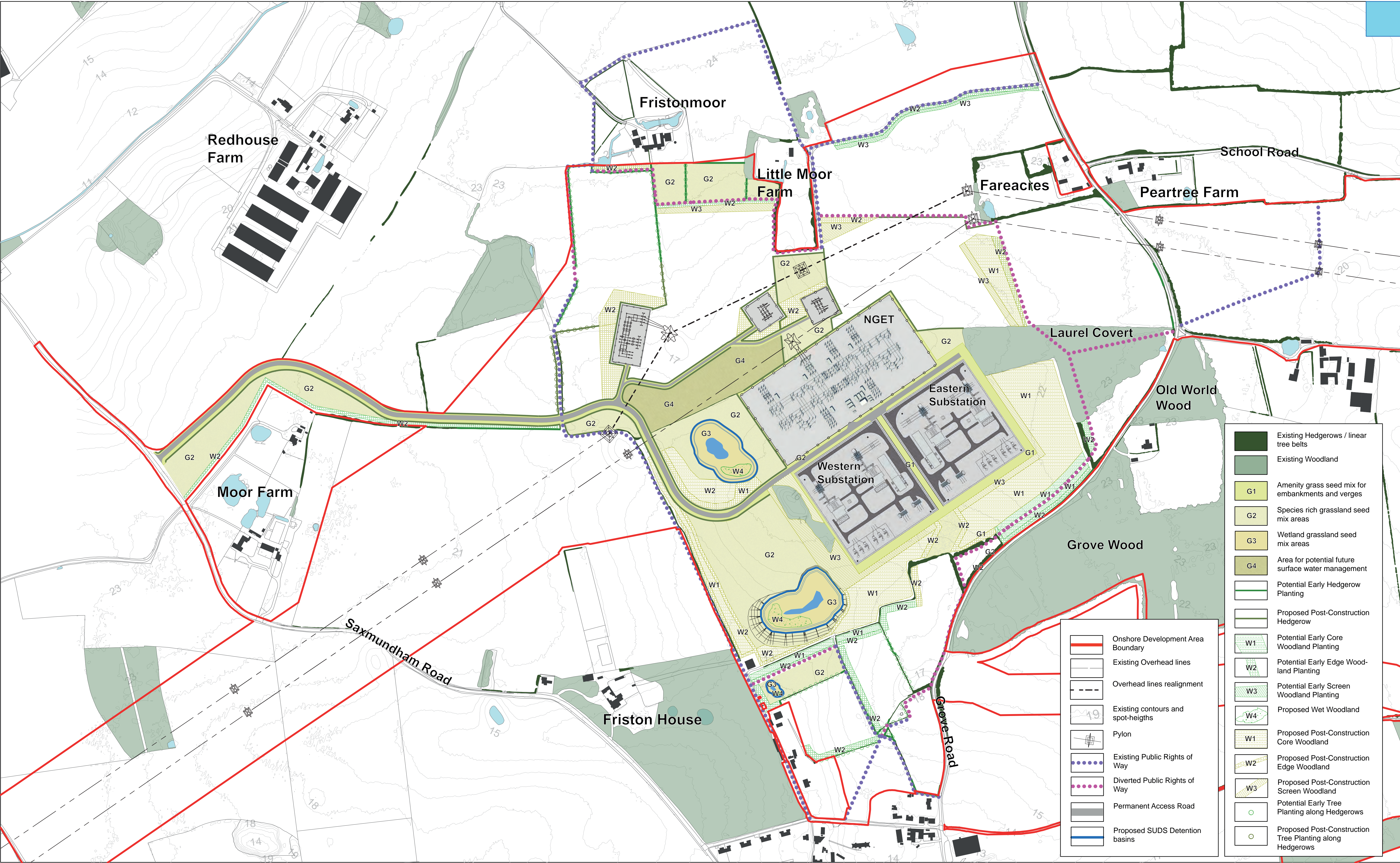
East Anglia TWO Offshore Windfarm



Outline Landscape Mitigation Plan

Applicants: East Anglia TWO Limited
Document Reference: ExA.AS-14.D4.V1
SPR Reference: EA2-DWF-ENV-REP-IBR-001086


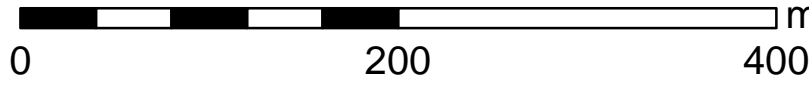
Date: 13th January 2021
Revision: Version 1
Author: Royal HaskoningDHV

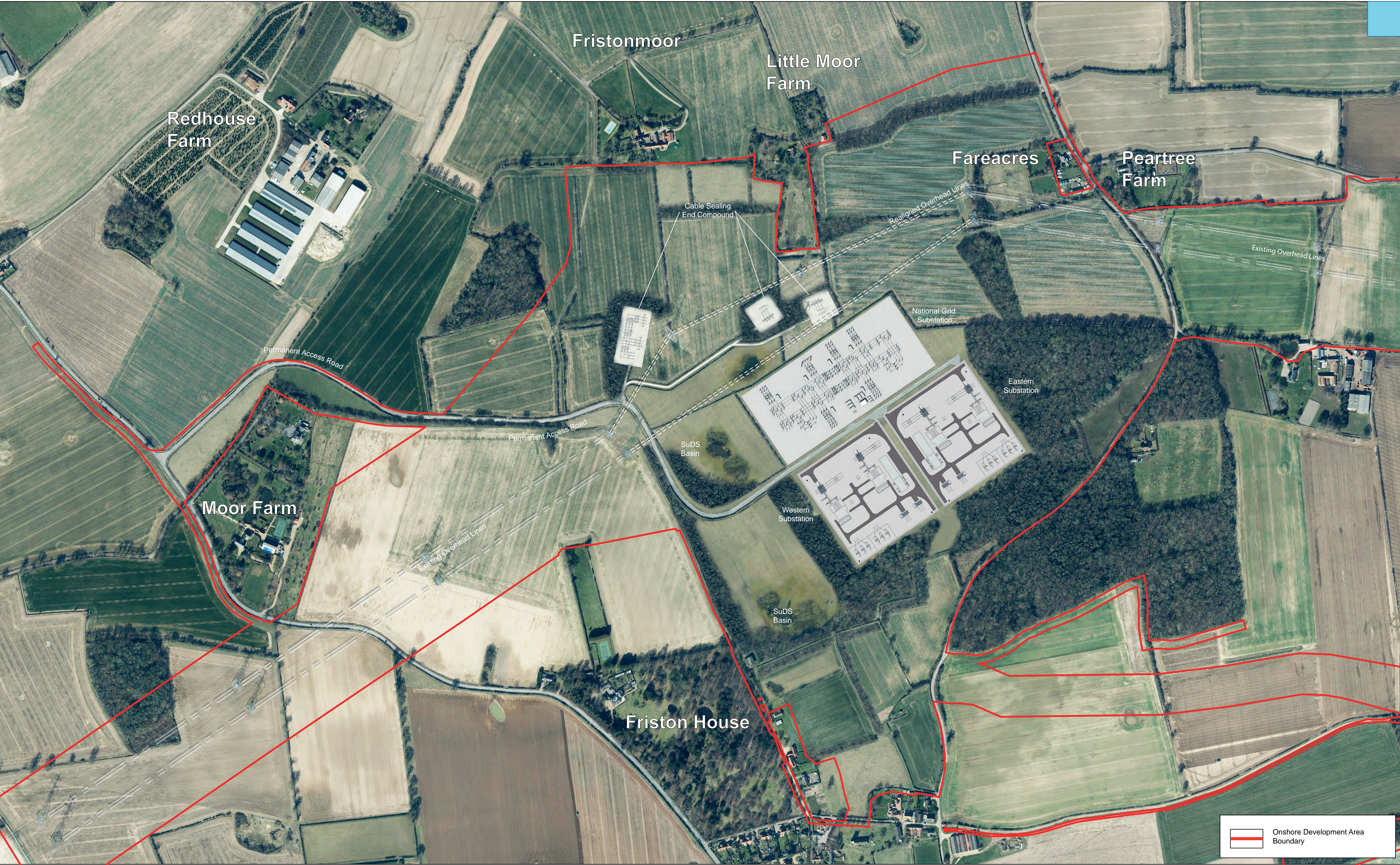
Applicable to **East Anglia TWO**



							1:3,000		<h1>East Anglia TWO</h1> <h2>OLMP General Arrangement</h2>	Doc Ref		EA2-DEVWF-ENV-REP-IBR-OLEMS	
	12	11/01/2021	st	Twelfth Issue.	Prepared:	st	Scale @ A1			Rev	2	Coordinate System: BNG Datum: OSGB36	
	11	08/01/2021	st	Eleventh Issue.	Checked:	sm	<p>This map has been produced to the latest known information at the time of issue, and has been produced for your information only. Please consult with the SPR Offshore GIS team to ensure the content is still current before using the information contained on this map. To the fullest extent permitted by law, we accept no responsibility or liability (whether in contract, tort (including negligence) or otherwise in respect of any errors or omissions in the information contained in the map and shall not be liable for any loss, damage or expense caused by such errors or omissions. Onshore Substations, National Grid Infrastructure and Cable Sealing End Compound is illustrated without shadow effects.</p>	Date		11/01/21			
	Rev	Date	By	Comment	Approved:	lt		Figure		3			





						1:4,000 Scale @ A1				East Anglia TWO OLMP Illustrative Plan (Overview scale)		Doc Ref	EA2-DEVWF-ENV-REP-IBR-OLEMS	
12	11/01/2021	st	Twelfth Issue.	Prepared:	mb	<small>This map has been produced to the latest known information at the time of issue, and has been produced for your information only. Please consult with the SPR Onshore GIS team to ensure the content is still current before using the information contained on this map. To the fullest extent permitted by law, we accept no responsibility or liability (whether in contract, tort (including negligence) or otherwise in respect of any errors or omissions in the information contained in the map and shall not be liable for any loss, damage or expense caused by such errors or omissions. Onshore Substations, National Grid Infrastructure and Cable Sealing End Compound is illustrated without shadow effects.</small>						Rev	2	Coordinate System: BNG Datum: OSGB36
11	08/01/2021	st	Eleventh Issue.	Checked:	sm							Date	11/01/21	
Rev	Date	By	Comment	Approved:	lt							Figure	4	



						1:3,000 Scale @ A1				East Anglia TWO OLMP Illustrative Plan			Doc Ref	EA2-DEVWF-ENV-REP-IBR-OLEMS	
	12	11/01/2021	st	Twelfth Issue.	Prepared:	st	<small>This map has been produced to the latest known information at the time of issue, and has been produced for your information only. Please consult with the SPR Offshore GIS team to ensure the content is still current before using the information contained on this map. To the fullest extent permitted by law, we accept no responsibility or liability (whether in contract, tort (including negligence) or otherwise in respect of any errors or omissions in the information contained in the map and shall not be liable for any loss, damage or expense caused by such errors or omissions. Onshore Substations, National Grid Infrastructure and Cable Sealing End Compound is illustrated without shadow effects.</small>						Rev	2	Coordinate System: BNG Datum: OSGB36
	11	08/01/2021	st	Eleventh Issue.	Checked:	sm							Date	11/01/21	
Rev	Date	By	Comment	Approved:	It								Figure	5	



 SCOTTISHPOWER RENEWABLES							1:3,000 Scale @ A1		<h1>East Anglia TWO</h1> <h2>OLMP Proposed Planting Plan</h2>	<table><tr><td>Doc Ref</td><td colspan="2">EA2-DEVWF-ENV-REP-IBR-OLEMS</td></tr><tr><td>Rev</td><td>2</td><td rowspan="3">Coordinate System: BNG Datum: OSGB36</td></tr><tr><td>Date</td><td>11/01/21</td></tr><tr><td>Figure</td><td>6</td></tr></table>	Doc Ref	EA2-DEVWF-ENV-REP-IBR-OLEMS		Rev	2	Coordinate System: BNG Datum: OSGB36	Date	11/01/21	Figure	6
	Doc Ref	EA2-DEVWF-ENV-REP-IBR-OLEMS																		
	Rev	2	Coordinate System: BNG Datum: OSGB36																	
	Date	11/01/21																		
	Figure	6																		
10	11/01/2021	st	Tenth Issue.	Prepared:	st	<p>This map has been produced to the latest known information at the time of issue, and has been produced for your information only. Please consult with the SPR Offshore GIS team to ensure the content is still current before using the information contained on this map.</p> <p>To the fullest extent permitted by law, we accept no responsibility or liability (whether in contract, tort (including negligence) or otherwise) in respect of any errors or omissions in the information contained in the map and shall not be liable for any loss, damage or expense caused by such errors or omissions.</p> <p>Onshore Substations, National Grid Infrastructure and Cable Sealing End Compound is illustrated without shadow effects.</p>														
9	08/01/2021	st	Ninth Issue.	Checked:	sm															
Rev	Date	By	Comment	Approved:	lt															



- Potential Early Woodland planting
- Post-Construction Woodland planting
- Potential Early New Native Hedgerow and Reinstatement
- Post-Construction New Native Hedgerow and Reinstatement
- Potential Early Individual Tree planting along Hedgerows
- Post-Construction Individual Tree planting along Hedgerows
- Onshore Development Area Boundary



11

11/01/2021

st

Eleventh Issue.

10

08/01/2021

st

Tenth Issue.

Rev

Date

By

Comment

Prepared:

st

Checked:

sm

Approved:

lt

11	11/01/2021	st	Eleventh Issue.
10	08/01/2021	st	Tenth Issue.
Rev	Date	By	Comment

1:3,000

Scale @ A1

0

125

250

m

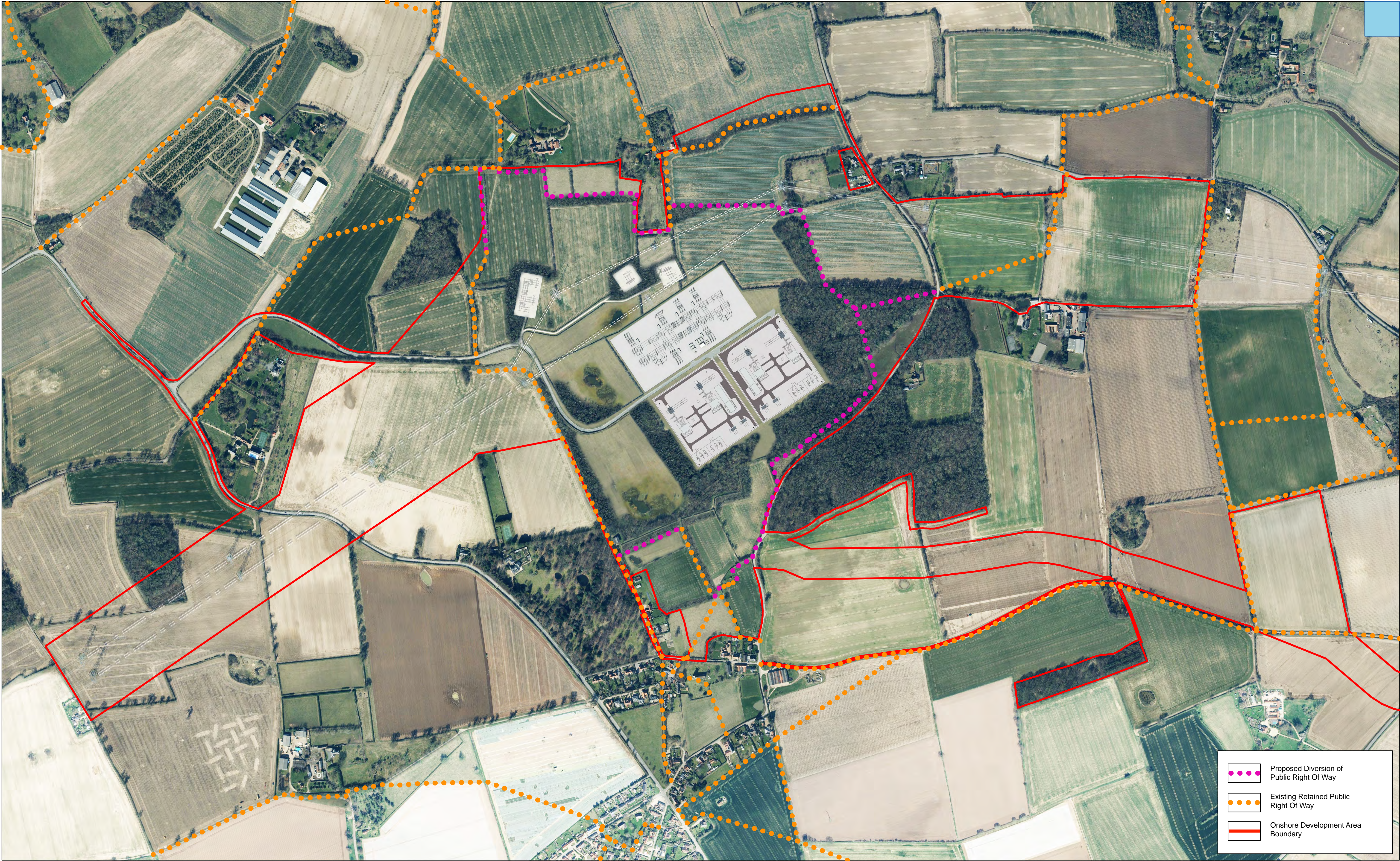
This map has been produced to the latest known information at the time of issue, and has been produced for your information only. Please consult with the SPR Offshore GIS team to ensure the content is still current before using the information contained on this map. To the fullest extent permitted by law, we accept no responsibility or liability (whether in contract, tort (including negligence) or otherwise in respect of any errors or omissions in the information contained in the map and shall not be liable for any loss, damage or expense caused by such errors or omissions.


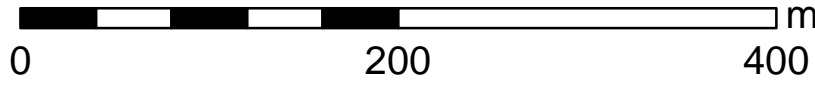
Onshore Substations, National Grid Infrastructure and Cable Sealing End Compound is illustrated without shadow effects.

East Anglia TWO


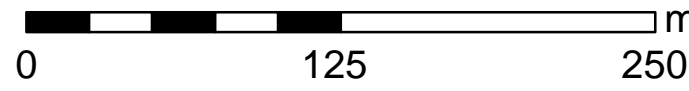
OLMP Timing of Planting

Doc Ref	EA2-DEVWF-ENV-REP-IBR-OLEMS	
Rev	2	Coordinate System: BNG Datum: OSGB36
Date	11/01/21	
Figure	7	



						1:4,000 Scale @ A1				East Anglia TWO OLMP Public Right of Way			Doc Ref	EA2-DEVWF-ENV-REP-IBR-OLEMS	
11	11/01/2021	st	Eleventh Issue.	Prepared:	mb	<small>This map has been produced to the latest known information at the time of issue, and has been produced for your information only. Please consult with the SPR Onshore GIS team to ensure the content is still current before using the information contained on this map. To the fullest extent permitted by law, we accept no responsibility or liability (whether in contract, tort (including negligence) or otherwise in respect of any errors or omissions in the information contained in the map and shall not be liable for any loss, damage or expense caused by such errors or omissions. Onshore Substations, National Grid Infrastructure and Cable Sealing End Compound is illustrated without shadow effects.</small>						Rev	2	Coordinate System: BNG Datum: OSGB36	
10	08/01/2021	st	Tenth Issue.	Checked:	sm							Date	11/01/21		
Rev	Date	By	Comment	Approved:	lt							Figure	8		



						1:3,000		<h1>East Anglia TWO</h1> <h2>OLMP Illustrative Plan (GIS)</h2>	Doc Ref	EA2-DEVWF-ENV-REP-IBR-OLEMS	
	4	11/01/2021	st	Fourth Issue.	Prepared:	mb			Rev	2	Coordinate System: BNG Datum: OSGB36
	3	08/01/2021	st	Third Issue.	Checked:	sm	Date		11/01/21		
	Rev	Date	By	Comment	Approved:	lt	Figure		9		
	<p><small>This map has been produced to the latest known information at the time of issue, and has been produced for your information only. Please consult with the SPR Offshore GIS team to ensure the content is still current before using the information contained on this map. To the fullest extent permitted by law, we accept no responsibility or liability (whether in contract, tort (including negligence) or otherwise) in respect of any errors or omissions in the information contained in the map and shall not be liable for any loss, damage or expense caused by such errors or omissions. Onshore Substations, National Grid Infrastructure and Cable Sealing End Compound is illustrated without shadow effects.</small></p>										